

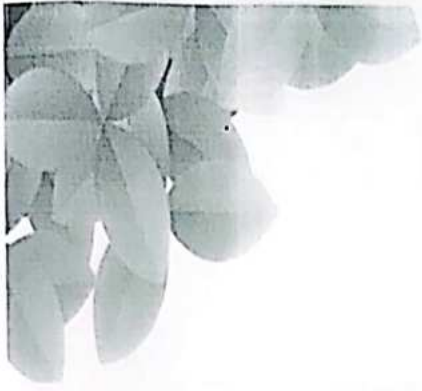


7.1.2 The Institution has facilities for alternate sources of energy and energy conservation measures

Table of Contents

Alternate Sources of Energy And Energy Conservation Measures	2
Geotagged Pictures of Solar Water Heater at Boys Hostel	3
Geotagged Pictures of Solar Water Heater at Girls Hostel	4
Geotagged Pictures of Solar Water Heater at Staff Quarters	5
Geotagged Pictures of Solar Panel at Canteen	6
Geotagged photos for Use of LED bulbs/ Power Efficient Equipment	7-11
Energy Efficient Electrical Equipment of IIMR PG Building	12
Energy Efficient Electrical Equipment of IIMR UG Building	13
Energy Efficient Electrical Equipment of Girls Hostel	14
Energy Efficient Electrical Equipment of Boys Hostel.....	15
Energy Efficient Electrical Equipment of Guest House.....	16
Energy Efficient Electrical Equipment of Staff Quarters.....	17
Energy Efficient Electrical Equipment of Canteen.....	18
Energy Efficient Electrical Equipment in other locations of the Institute	19
Documents of Alternative Sources of Energy and Energy Conservation	20-24





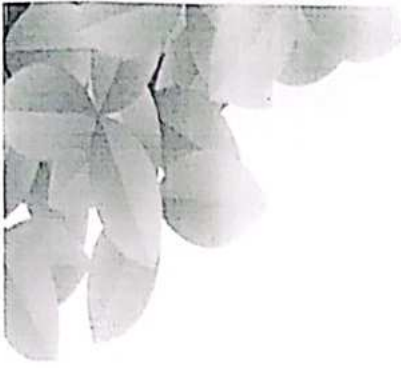
Alternate Sources of Energy And Energy Conservation Measures

To conserve the energy consumption and also to switch to alternate sources of energy, various measures are being taken in the campus. Also efforts are being made towards sensitizing the teaching members, staff, and students for the same.

In this direction following measures have been initiated

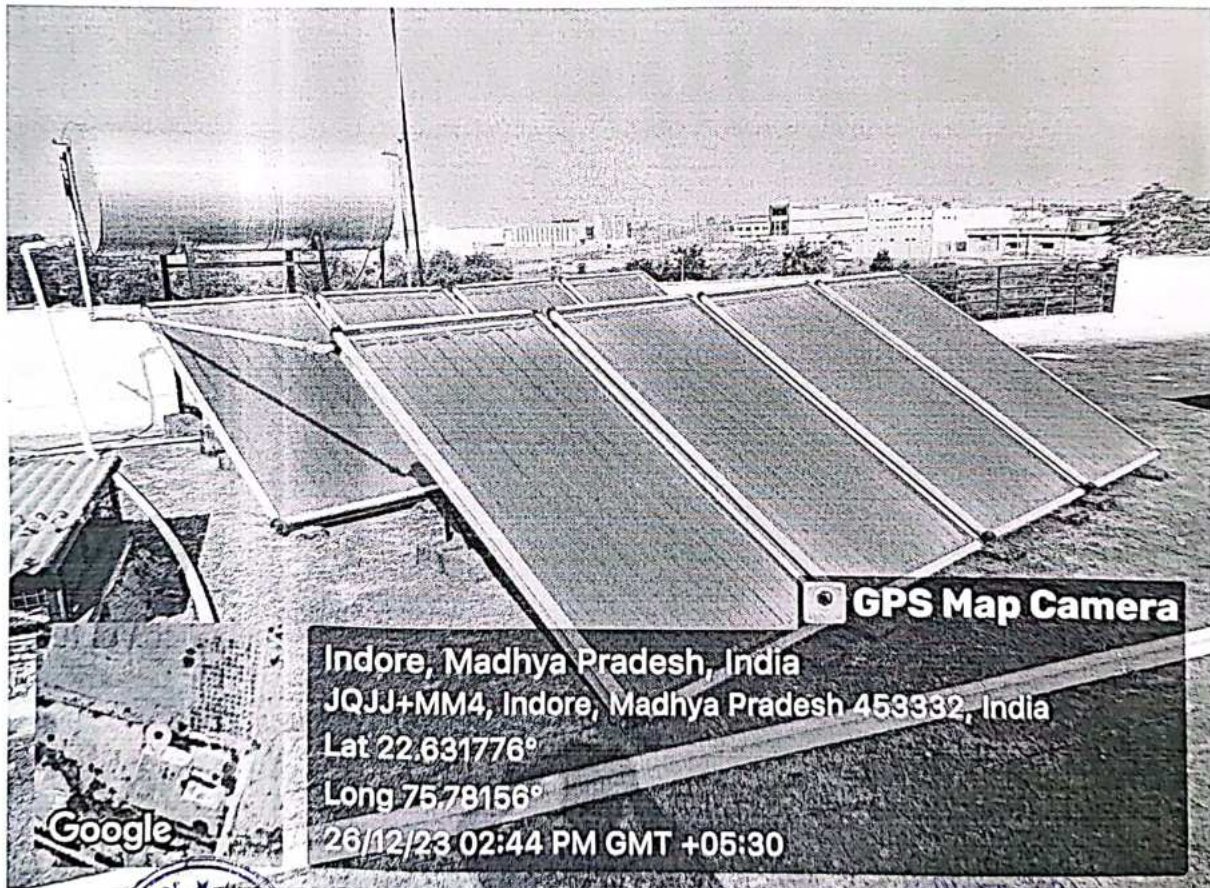
1. Solar water heater at
 - a. Girls Hostel
 - b. Boys Hostel
 - c. Staff Quarters
2. Solar Panel at Canteen for Energy Production
3. Use of LED and CFL

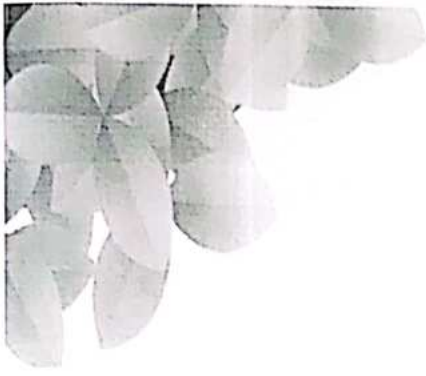




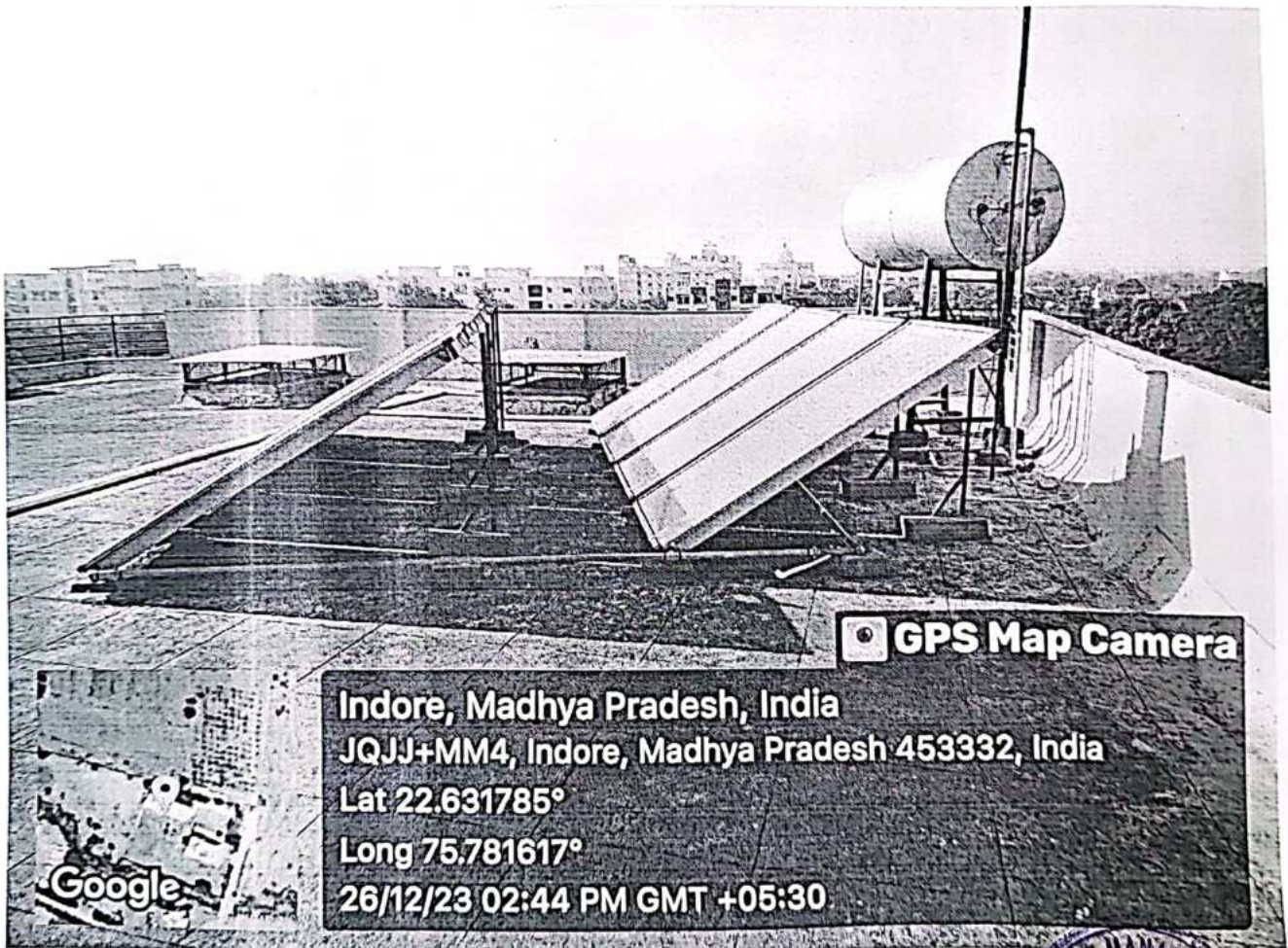
IIMR is using solar energy with total capacity of 13 KW. The solar cell is situated at four different places like Staff quarter, boy's hostel, girl's hostel and Canteen. Total power requirement on monthly basis is 116.4115 KW (IIMR) (Refer below table for calculation). As well as for saving energy we used LED lights so that power is going to save and also used AC with 5-star rating for energy saving

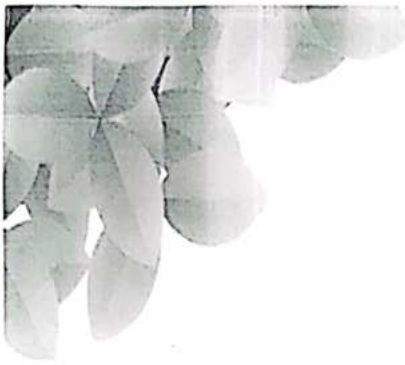
**Geotagged Pictures of Solar Water Heater at Boys Hostel
(Capacity=3KW)**



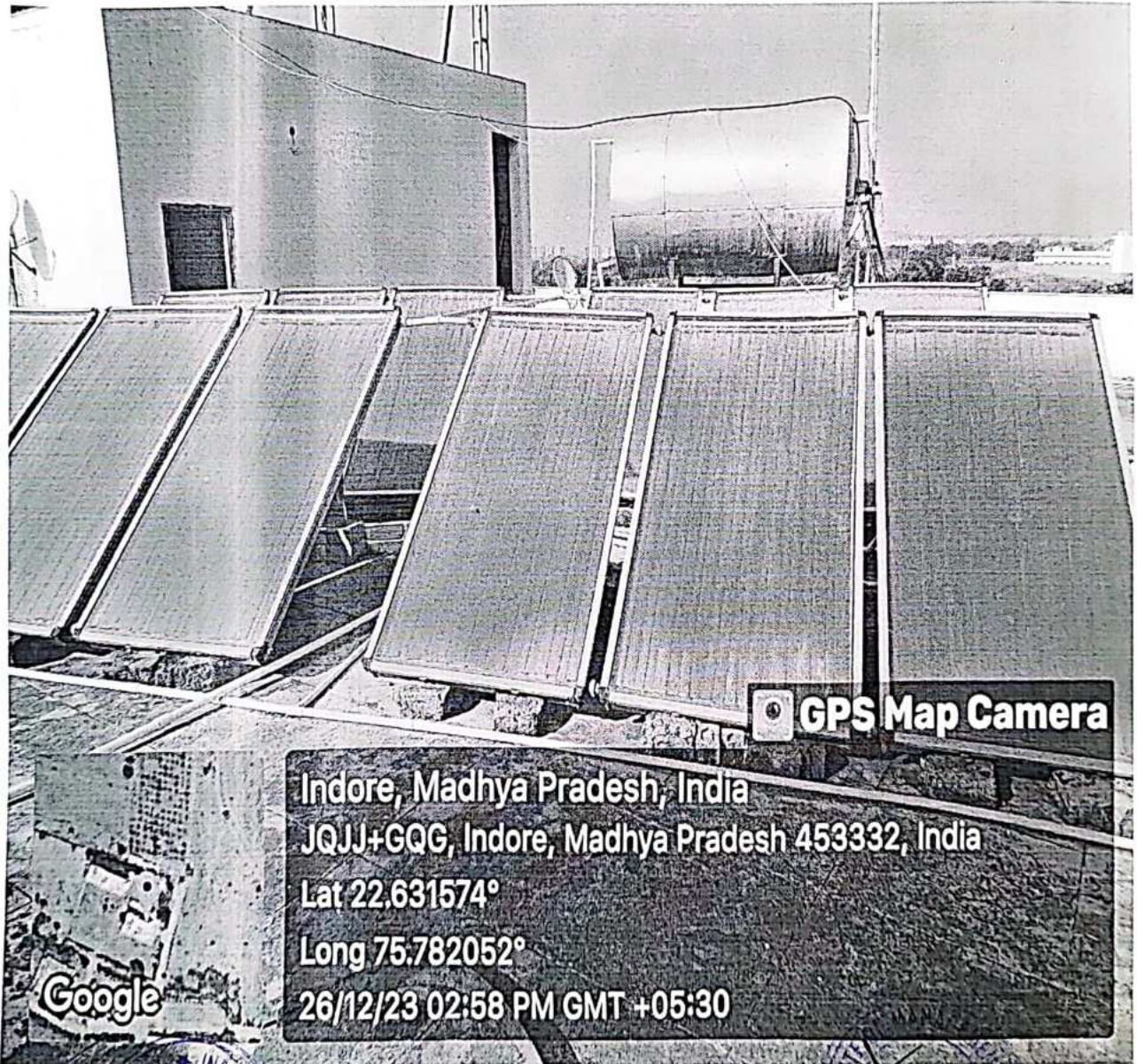


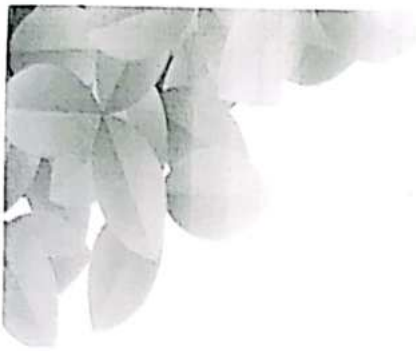
**Geotagged Pictures of Solar Water Heater at Girls Hostel
(Capacity=3KW)**



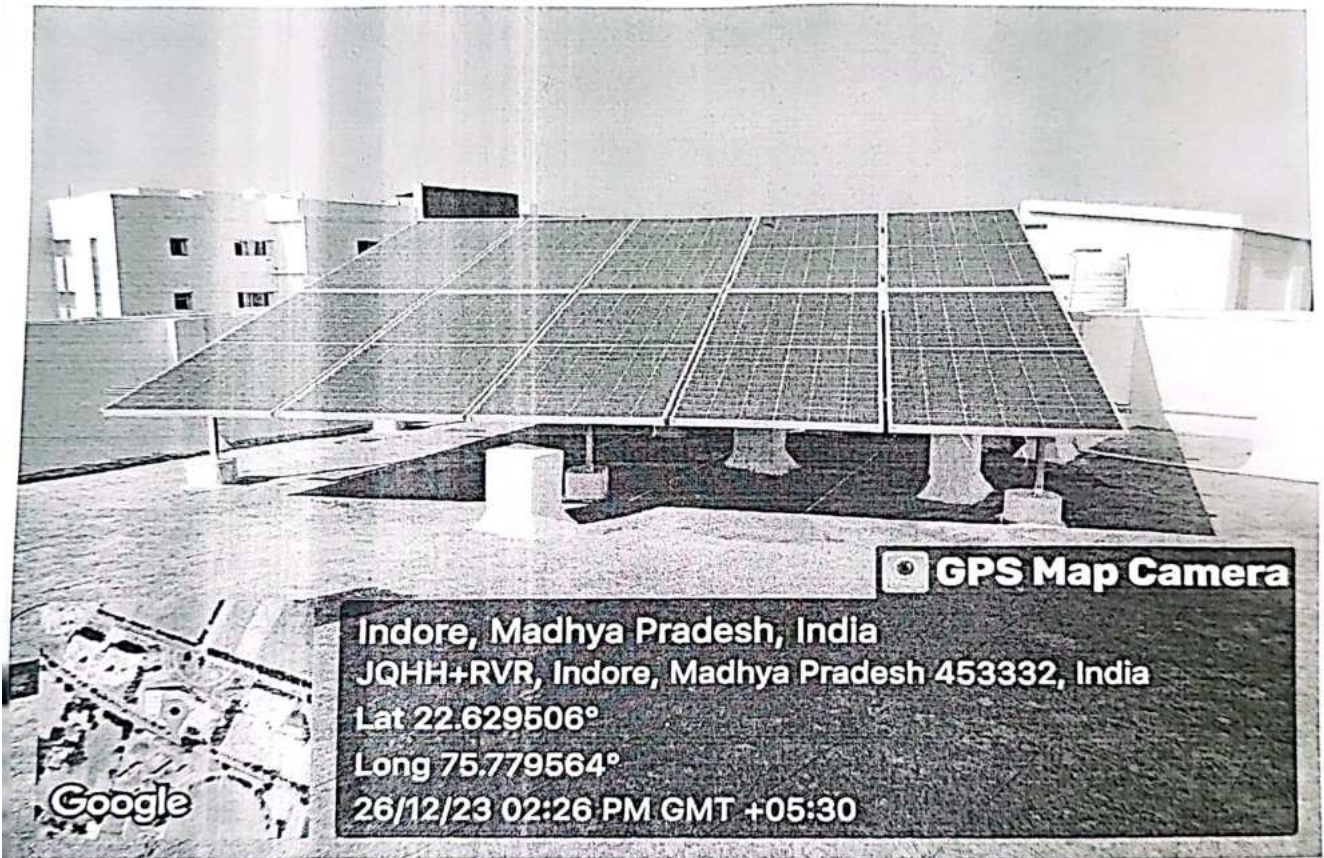


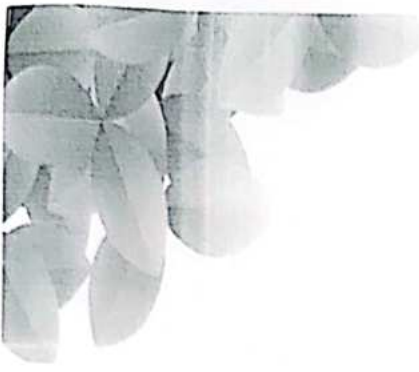
**Geotagged Pictures of Solar Water Heater at Staff Quarters
(Capacity=2KW)**



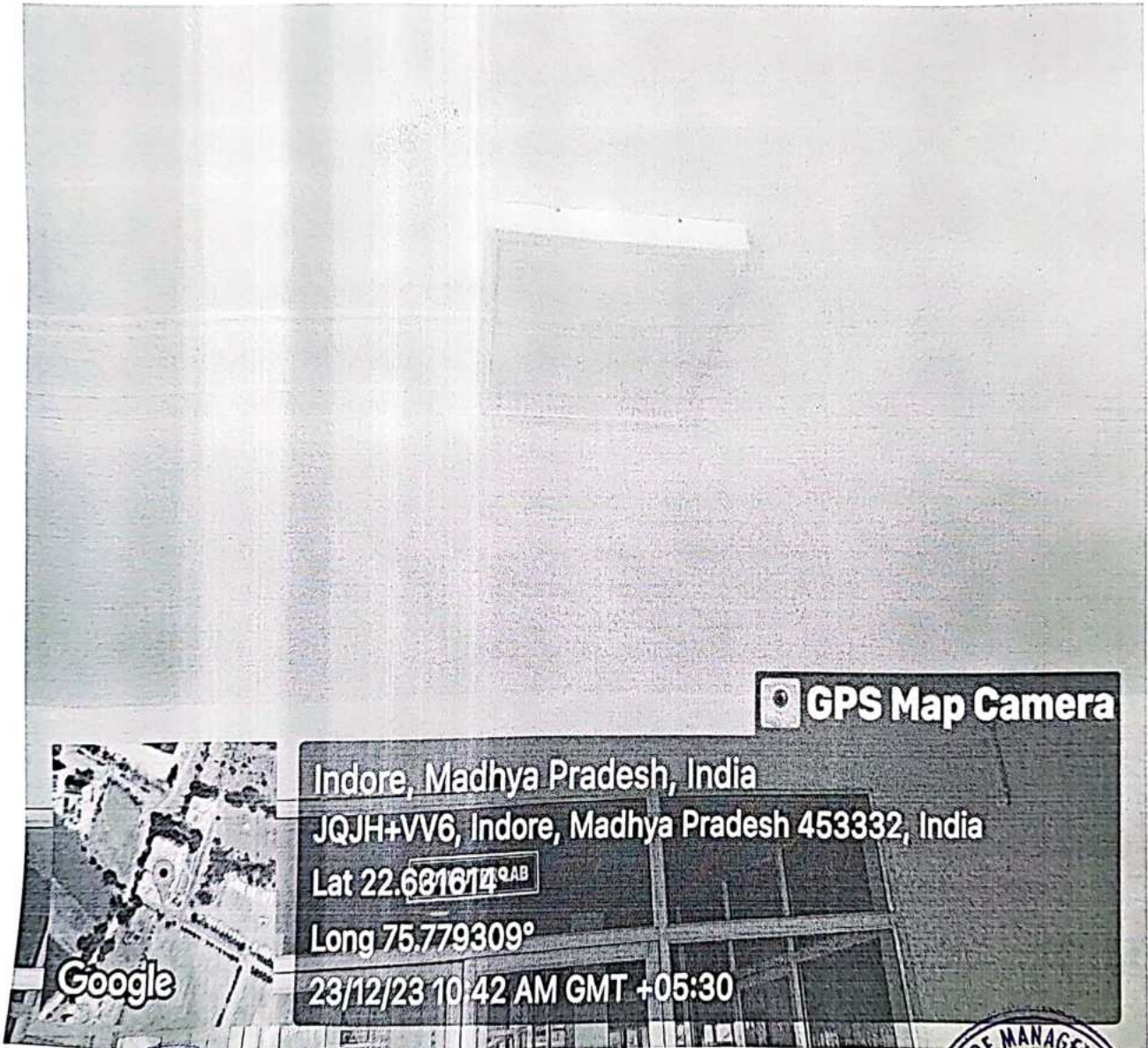


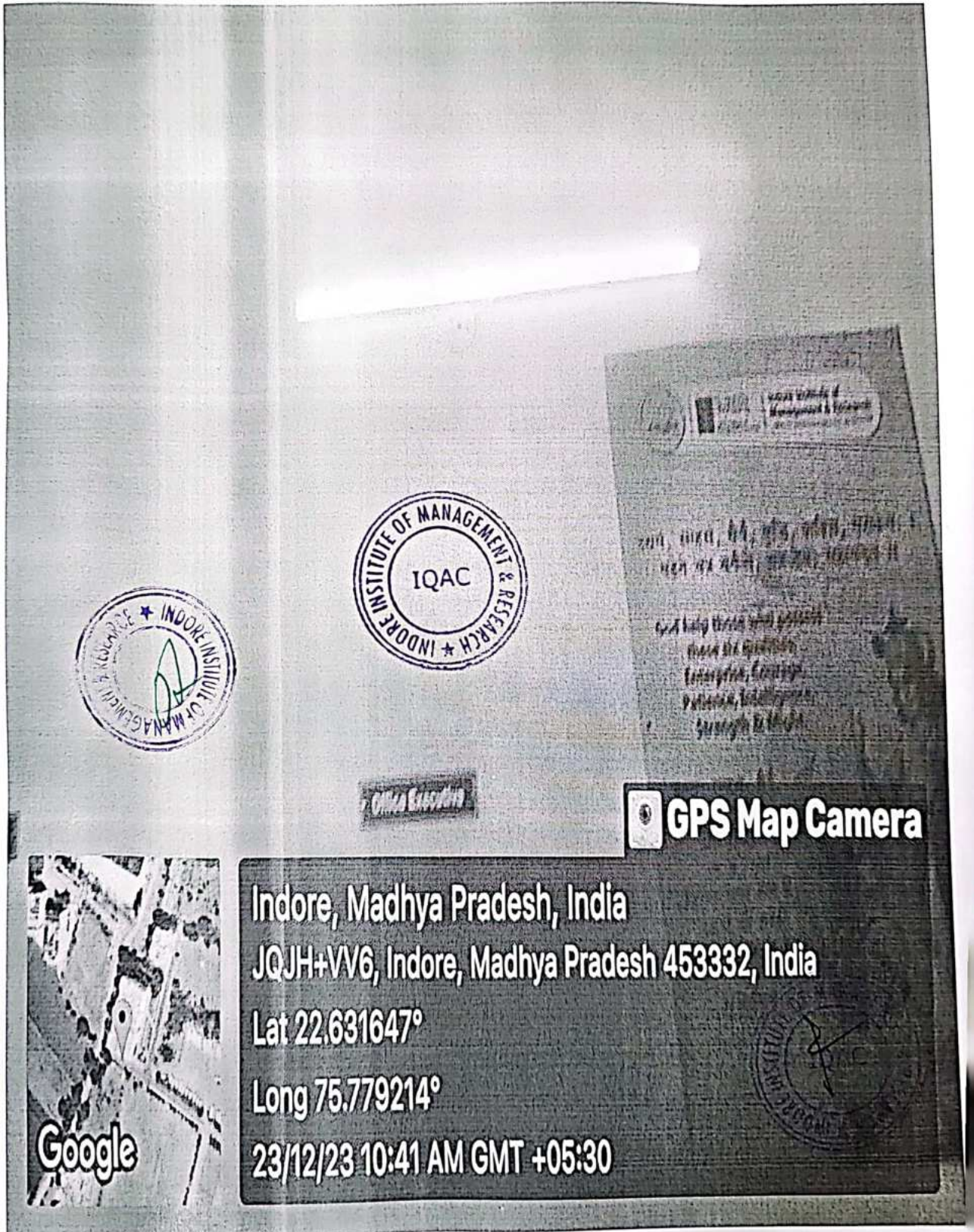
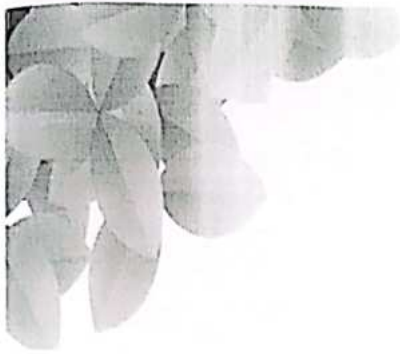
Geotagged Pictures of Solar Panel at Canteen





Geotagged photos for Use of LED bulbs/ Power Efficient Equipment

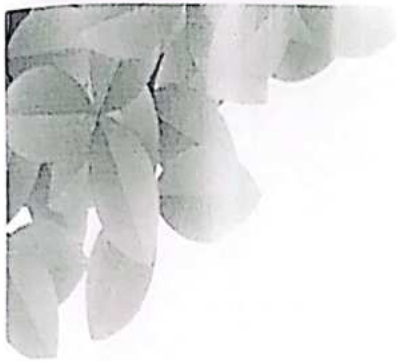




GPS Map Camera



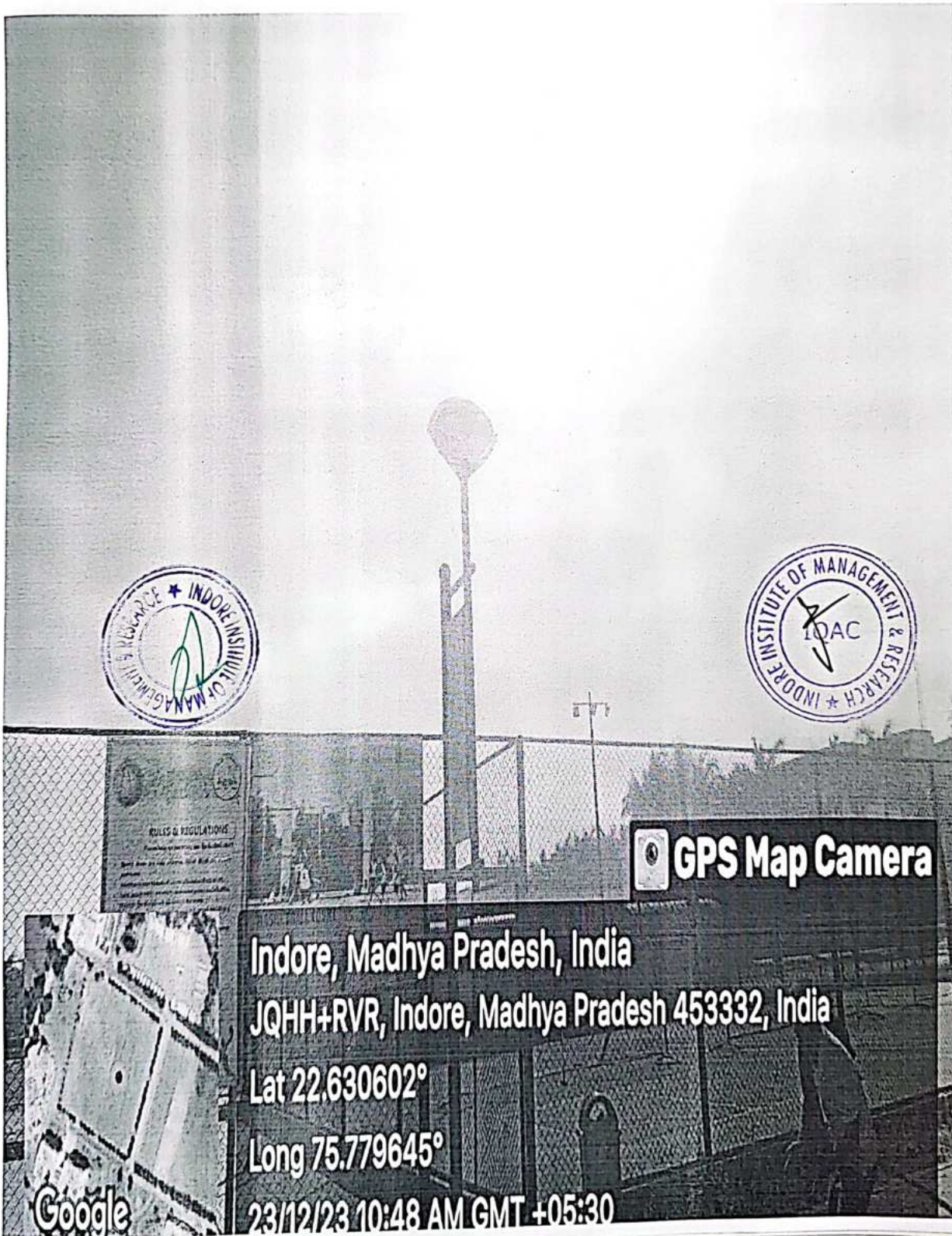
Indore, Madhya Pradesh, India
JQJH+VV6, Indore, Madhya Pradesh 453332, India
Lat 22.631647°
Long 75.779214°
23/12/23 10:41 AM GMT +05:30



IMR
 Indore Institute of
 Management & Research
www.indoreinstitute.com

Indore Institute of Management & Research

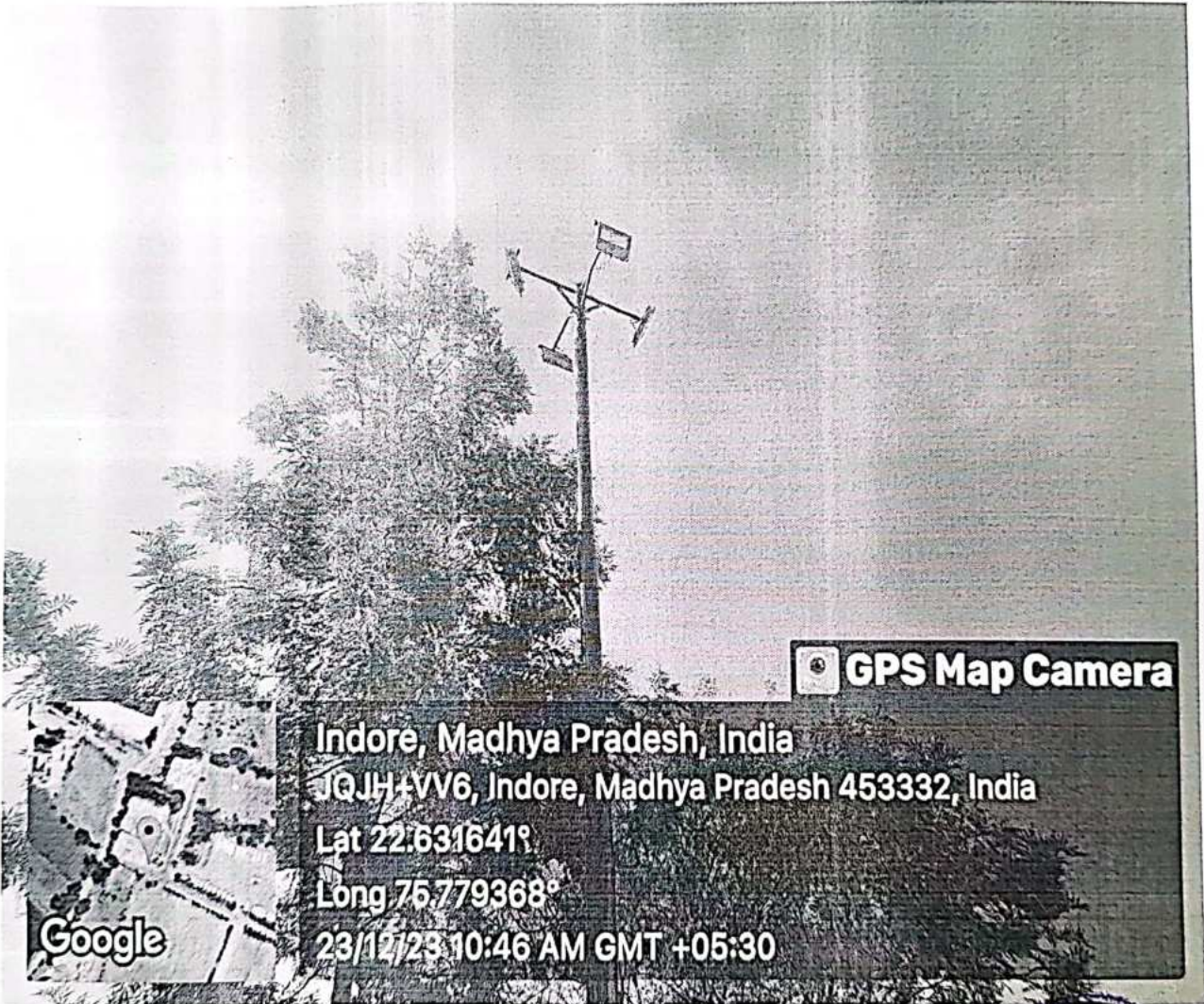
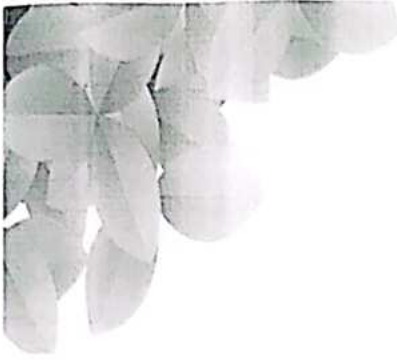
Affiliated to - DAVV (Indore) | Approved by - AICTE (New Delhi)

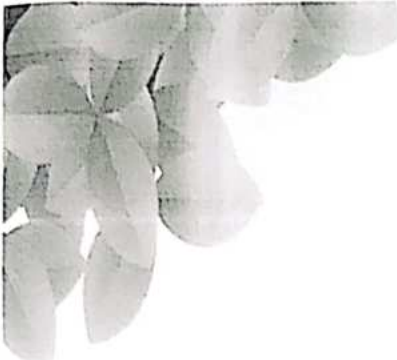


GPS Map Camera

Indore, Madhya Pradesh, India
JQHH+RVR, Indore, Madhya Pradesh 453332, India
Lat 22.630602°
Long 75.779645°
23/12/23 10:48 AM GMT +05:30



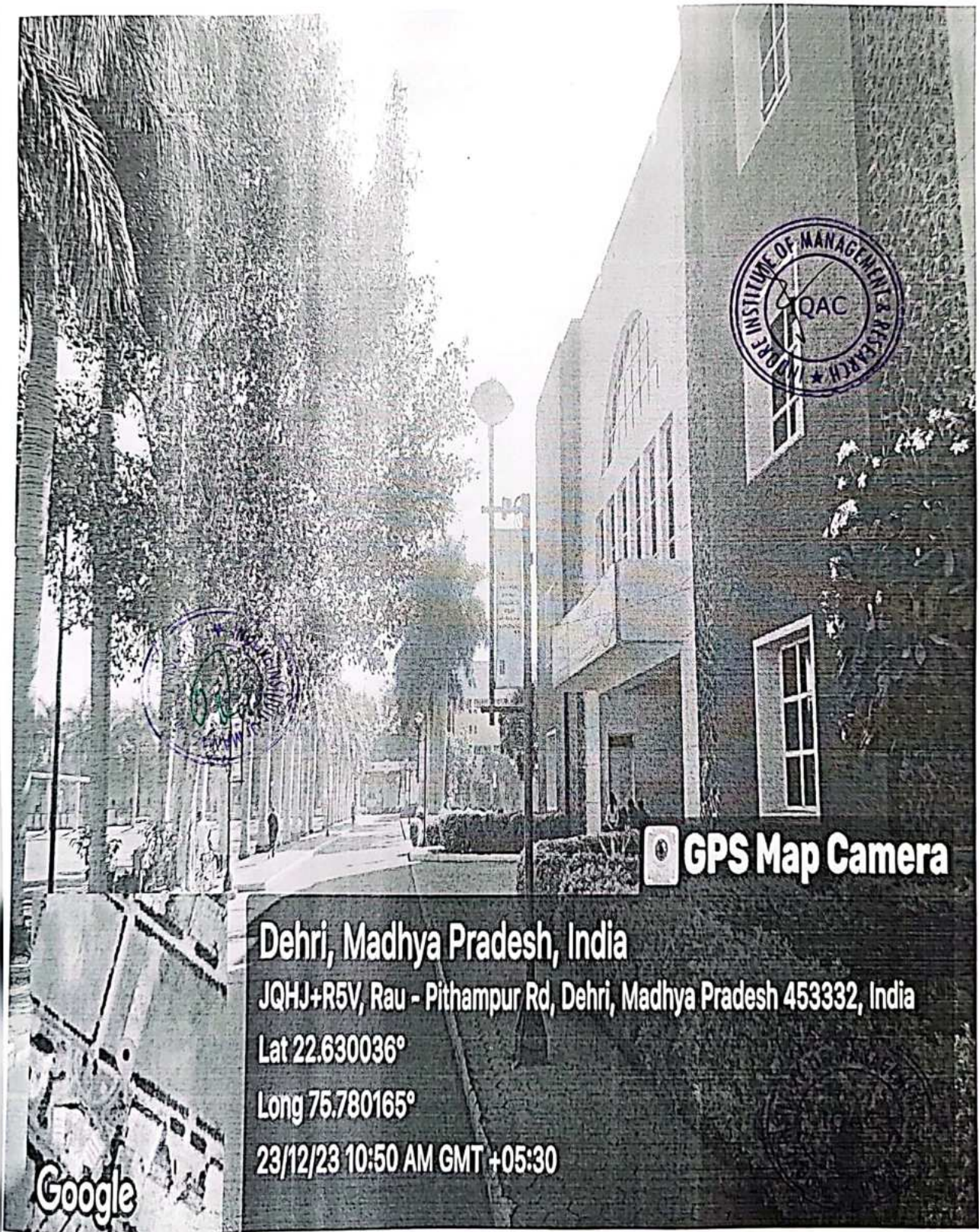




IMR
Indore Institute of
Management & Research
www.indoreinstitute.com

Indore Institute of Management & Research

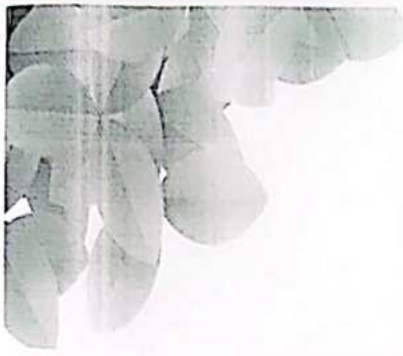
Affiliated to - DAVV (Indore) | Approved by - AICTE (New Delhi)



 **GPS Map Camera**

Dehri, Madhya Pradesh, India
JQHJ+R5V, Rau - Pithampur Rd, Dehri, Madhya Pradesh 453332, India
Lat 22.630036°
Long 75.780165°
23/12/23 10:50 AM GMT +05:30

Google

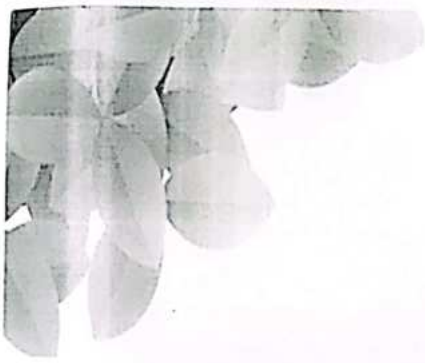


Energy Efficient Electrical Equipment of IIMR PG Building

IIMR ELECTRICAL MAINTENANCE																				
S.No	Room No	Room Name	Consumption			Celling fan 75 watt			Tube light 36 watt			2*2 FL Light 72 watt			8*8 Inch 18*2=36 watt C11 Light			18 watt LED tube light		
			NO.	NO.	NO.	NO.	NO.	NO.	NO.	NO.	NO.	NO.	NO.	NO.	NO.	NO.	NO.	NO.		
			NO.	NO.	NO.	NO.	NO.	NO.	NO.	NO.	NO.	NO.	NO.	NO.	NO.	NO.	NO.	NO.		
1	GF	Computer Lab 2*2	12	12		9	6	3	34	14										
2	GF	Principal Office	1	6		6	2	4												
3	GF	Passage																		
4	GF	Ladies Toilet														2	2			
5	GF	Gents Toilet				2	2	1												
6	FF	Faculty Room	4	4		3	2	1												
7	FF	Exam Control Room	9	8	1				12	12										
8	FF	Faculty Room 2*2	2	2		4	2	2												
9	FF	Class Room 1	6	6		4	4									2	2			
10	FF	Class Room 2	6	6		5	5									1	1			
11	FF	Passage				6	5	1												
12	SF	Hall 2*2	10	9	1				28	28										
13	SF	Class Room 3*	6	5	1	9	8	1												
14	SF	Class Room 4*	6	6			9	9												
15	SF	Ladies Toilet														1	1			
16	SF	Gents Toilet					1	1												
17	SF	Passage				5	2	3												
18	FF	Class Room 5*	6	5	1	9	9													
19	FF	Class Room 6*	6	5	1	9	9													
20	FF	Tutorial Room 2*	4	4		12	11	1												
21	FF	Tutorial Room 1*	9	9					12	12										
22	FF	Ladies Toilet				1	1													
23	FF	Gents Toilet				1	1													
24	FF	Passage				5	5													
25	GF	Computer	1	1		1	1						2	2						
26		A.C. UNIT	1																	

S.No	Details	Qty	Total Watt	Total Kw
1	Celling fan 75 watt	94	7050	7.05
2	Tube light 36 watt	91	3276	3.276
3	2*2 FL Light 72 watt	86	6192	6.192
4	8*8 Inch 18*2=36 watt C11 Light	4	144	0.144
5	18 watt LED tube light	6	108	0.108
	Total		16770	16.77





Energy Efficient Electrical Equipment of IIMR UG Building

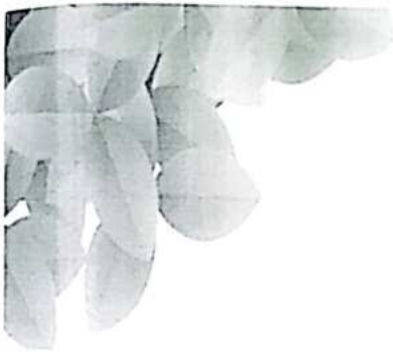
S.No	Room No	Room Name	EQUIPMENT OF MAINS/SAMT										
			Ceiling Fan 75 watt		Tube Light (Normal) 36 watt		T22 Tube PL Light 72 watt		PFC Ballast 10*1.5 M watt		LED Tube Light 36/72 watt		Water cooler 2000 watt
1	202	Director Office	1	1									
2	202	Lab											
3	203	Work	1	1									
4	204												
5	203	Office	15	15	2	2	30	30	12	12	4		
6	204	Work	1	1									
7	204	Director Office	1	1									
8	202	Director Office											
9	202	Director Office											
10	203	Work											
11	203	Director Office	2	2									
12	203	Director Office	6	6									
13	203	Director Office	4	4									
14	204	Director Office	1	1									
15	203	Director Office	1	1									
16	204	Director Office	1	1									
17	203	Director Office	1	1									
18	203	Director Office	5	5									
19	202	Director Office	5	5									
20	203	Director Office	1	1									
21	204	Director Office	1	1									
22	203	Director Office	1	1									
23	203	Director Office	1	1									
24	203	Director Office	1	1									
25	203	Director Office	1	1									
26	203	Director Office	1	1									
27	203	Director Office	1	1									
28	203	Director Office	1	1									
29	204	Director Office	1	1									
30	203	Director Office	1	1									
31	203	Director Office	1	1									
32	203	Director Office	1	1									
33	203	Director Office	1	1									
34	203	Director Office	1	1									
35	203	Director Office	1	1									
36	203	Director Office	1	1									
37	203	Director Office	1	1									
38	203	Director Office	1	1									
39	203	Director Office	1	1									
40	203	Director Office	1	1									
41	203	Director Office	1	1									
42	203	Director Office	1	1									
43	203	Director Office	1	1									
44	203	Director Office	1	1									
45	203	Director Office	1	1									
46	203	Director Office	1	1									
47	203	Director Office	1	1									
48	203	Director Office	1	1									
49	203	Director Office	1	1									
50	203	Director Office	1	1									
51	203	Director Office	1	1									
52	203	Director Office	1	1									
53	203	Director Office	1	1									
54	203	Director Office	1	1									
55	203	Director Office	1	1									
56	203	Director Office	1	1									
57	203	Director Office	1	1									
58	203	Director Office	1	1									
59	203	Director Office	1	1									
60	203	Director Office	1	1									
61	203	Director Office	1	1									
62	203	Director Office	1	1									
63	203	Director Office	1	1									
64	203	Director Office	1	1									
65	203	Director Office	1	1									
66	203	Director Office	1	1									
67	203	Director Office	1	1									
68	203	Director Office	1	1									
69	203	Director Office	1	1									
70	203	Director Office	1	1									
71	203	Director Office	1	1									
72	203	Director Office	1	1									
73	203	Director Office	1	1									
74	203	Director Office	1	1									
75	203	Director Office	1	1									
76	203	Director Office	1	1									
77	203	Director Office	1	1									
78	203	Director Office	1	1									
79	203	Director Office	1	1									
80	203	Director Office	1	1									
81	203	Director Office	1	1									
82	203	Director Office	1	1									
83	203	Director Office	1	1									
84	203	Director Office	1	1									
85	203	Director Office	1	1									
86	203	Director Office	1	1									
87	203	Director Office	1	1									
88	203	Director Office	1	1									
89	203	Director Office	1	1									
90	203	Director Office	1	1									
91	203	Director Office	1	1									
92	203	Director Office	1	1									
93	203	Director Office	1	1									
94	203	Director Office	1	1									
95	203	Director Office	1	1									
96	203	Director Office	1	1									
97	203	Director Office	1	1									
98	203	Director Office	1	1									
99	203	Director Office	1	1									
100	203	Director Office	1	1									

S.No	Details	Qty	Total Watt	Total Kw
1	Ceiling fan 75 watt	121	9075	3.75
2	Tube light 36 watt	214	7704	3.08
3	T22 Tube Light 72 watt	72	5184	2.07
4	PFC Ballast 10*1.5 watt	21	315	0.125
5	Water cooler 2000 watt	4	8000	3
6	Air cooler 200 watt	5	1000	0.4
Total			30865	12.42



Principal
Indore Institute of Management & Research
Opp. ...
RAJ. ...



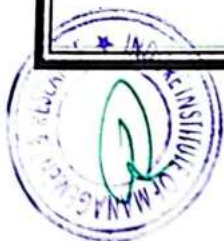


Energy Efficient Electrical Equipment of Boys Hostel

MINIMUM ELECTRICAL MAINTENANCE

Sl. No.	Equipment Name	Location	Make	Capacity	Year of Purchase	Remarks
1
2
3
4
5
6
7
8
9
10
11
12
13
14
15
16
17
18
19
20
21
22
23
24
25
26
27
28
29
30
31
32
33
34
35
36
37
38
39
40
41
42
43
44
45
46
47
48
49
50
51
52
53
54
55
56
57
58
59
60
61
62
63
64
65
66
67
68
69
70
71
72
73
74
75
76
77
78
79
80
81
82
83
84
85
86
87
88
89
90
91
92
93
94
95
96
97
98
99
100

S. No. 204/15
Date: 15/01/2015
Signature: _____
Official Seal: _____





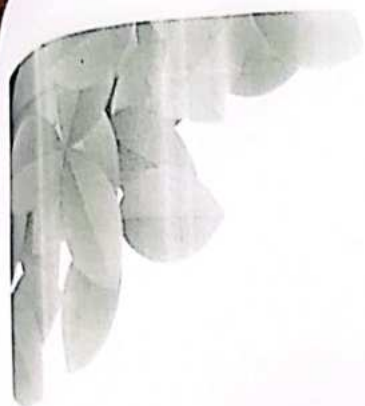
Energy Efficient Electrical Equipment of Guest House

GUEST HOUSE ELECTRICAL MAINTENANCE																
S.No.	Room No.	Room Name	CONSUMPTION													
			LED Tube Light			9.5 Watt LED Bulb			CU 15 Watt			Fan/Wall Fan			AC(1.5 Ton)	
			Qty	Watt	Wattage	Qty	Watt	Wattage	Qty	Watt	Wattage	Qty	Watt	Wattage	Qty	Watt
1	GF	Passage	1													
2		Office														
3		Store				1	1-									
4		Room	2	2-		3	3-					4	4-		2	2-
5		Room				5	5-					1	1-		1	1-
6		Room	1	1-		2	2-					1	1-			
7		Room	2	2-		4	4-		1	1-		2	2-		1	1-
8		Office				3	3-									
9		Parking Light							10	10-						
10		Passage				3	3-					1	1-			
11		Garment Room (Indoor)				1	1-		1	1-		1	1-			
12	FF	Room							5	5-		2	2-		1	1-
13		Room							2	2-		1	1-			
14		Room				1	1-									
15		Room (Dormitory)							2	2-		2	2-		1	1-
16		Room				1	1-		3	3-						
17		Room No.				4	4-		1	1-		2	2-		1	1-
18		Garment Room (Indoor)	1	1-		2	2-	1				1	1-			

S.No.	Detail	Qty	Total Watt	Total Kw
1	Ceiling fan 75 watt	18	1350	1.35
2	Tube light 35 watt	7	245	0.245
3	9.5 Watt LED Bulb	31	299	0.299
4	CU 15 Watt	25	450	0.45
5	AC(1.5 Ton)	7	2100	2.1
	Total		2331	2.331

Prof. ...
Opp. JIL, P. H. Road,
RAU, INDORE (M.P.)





Energy Efficient Electrical Equipment in other locations of the Institute

CONSUMPTION		LIGHT ELECTRICAL MAINTENANCE																	
Sl. No.	Room No.	Room Name	Type	No. of		Watt	No. of		Watt	No. of		Watt	No. of		Watt	No. of		Watt	
				1	2		1	2		1	2		1	2		1	2		
1	107	107 Room	Tube	1	1	85watt	02												
2		107 Lab	Tube	1	1	85watt	02												
3		Main Gate	Tube	1	1	85watt	02												
4		Quart Room	LED	3	3														
5		Labour Room	LED	3	3														
6		Parking Light	85watt	6		85watt	02												
7		Street Light	85watt	6		85watt	02												
8		Lamp Room	light	35	1	20watt		5											
9		1st Block Metal Light	85watt	2	2														
10		2nd Block Metal Light	85watt																
11		3rd Block Metal Light	85watt																
12		4th Block Metal Light	85watt																
13	BT	5th Block Metal Light	85watt																
14		6th Block Metal Light	85watt	4	4	400watt	01												
15		7th Block Metal Light	85watt																
16		8th Block Metal Light	1 led			85watt													
17		9th Block Metal Light	1 led			85watt													
18		10th Block Metal Light	1 led			85watt													
19		11th Block Metal Light	80 w	2		80watt		2											
20		12th Block Metal Light	80 w	2		80watt		2											
21		13th Block Metal Light	400 w	2	15	400 w		5											
22		14th Block Metal Light	400 w	2	15	400 w		5											
23		15th Block Metal Light	400 w	2	15	400 w		5											
24		16th Block Metal Light	400 w	2	15	400 w		5											
25		17th Block Metal Light	400 w	2	15	400 w		5											
26		18th Block Metal Light	400 w	2	15	400 w		5											
27		19th Block Metal Light	400 w	2	15	400 w		5											
28		20th Block Metal Light	400 w	2	15	400 w		5											
29		21st Block Metal Light	400 w	2	15	400 w		5											
30		22nd Block Metal Light	400 w	2	15	400 w		5											
31		23rd Block Metal Light	400 w	2	15	400 w		5											
32		24th Block Metal Light	400 w	2	15	400 w		5											
33		25th Block Metal Light	400 w	2	15	400 w		5											
34		26th Block Metal Light	400 w	2	15	400 w		5											
35		27th Block Metal Light	400 w	2	15	400 w		5											
36		28th Block Metal Light	400 w	2	15	400 w		5											
37		29th Block Metal Light	400 w	2	15	400 w		5											
38		30th Block Metal Light	400 w	2	15	400 w		5											
39		31st Block Metal Light	400 w	2	15	400 w		5											
40		32nd Block Metal Light	400 w	2	15	400 w		5											
41		33rd Block Metal Light	400 w	2	15	400 w		5											
42		34th Block Metal Light	400 w	2	15	400 w		5											
43		35th Block Metal Light	400 w	2	15	400 w		5											
44		36th Block Metal Light	400 w	2	15	400 w		5											
45		37th Block Metal Light	400 w	2	15	400 w		5											
46		38th Block Metal Light	400 w	2	15	400 w		5											
47		39th Block Metal Light	400 w	2	15	400 w		5											
48		40th Block Metal Light	400 w	2	15	400 w		5											
49		41st Block Metal Light	400 w	2	15	400 w		5											
50		42nd Block Metal Light	400 w	2	15	400 w		5											
51		43rd Block Metal Light	400 w	2	15	400 w		5											
52		44th Block Metal Light	400 w	2	15	400 w		5											
53		45th Block Metal Light	400 w	2	15	400 w		5											
54		46th Block Metal Light	400 w	2	15	400 w		5											
55		47th Block Metal Light	400 w	2	15	400 w		5											
56		48th Block Metal Light	400 w	2	15	400 w		5											
57		49th Block Metal Light	400 w	2	15	400 w		5											
58		50th Block Metal Light	400 w	2	15	400 w		5											
59		51st Block Metal Light	400 w	2	15	400 w		5											
60		52nd Block Metal Light	400 w	2	15	400 w		5											
61		53rd Block Metal Light	400 w	2	15	400 w		5											
62		54th Block Metal Light	400 w	2	15	400 w		5											
63		55th Block Metal Light	400 w	2	15	400 w		5											
64		56th Block Metal Light	400 w	2	15	400 w		5											
65		57th Block Metal Light	400 w	2	15	400 w		5											
66		58th Block Metal Light	400 w	2	15	400 w		5											
67		59th Block Metal Light	400 w	2	15	400 w		5											
68		60th Block Metal Light	400 w	2	15	400 w		5											
69		61st Block Metal Light	400 w	2	15	400 w		5											
70		62nd Block Metal Light	400 w	2	15	400 w		5											
71		63rd Block Metal Light	400 w	2	15	400 w		5											
72		64th Block Metal Light	400 w	2	15	400 w		5											
73		65th Block Metal Light	400 w	2	15	400 w		5											
74		66th Block Metal Light	400 w	2	15	400 w		5											
75		67th Block Metal Light	400 w	2	15	400 w		5											
76		68th Block Metal Light	400 w	2	15	400 w		5											
77		69th Block Metal Light	400 w	2	15	400 w		5											
78		70th Block Metal Light	400 w	2	15	400 w		5											
79		71st Block Metal Light	400 w	2	15	400 w		5											
80		72nd Block Metal Light	400 w	2	15	400 w		5											
81		73rd Block Metal Light	400 w	2	15	400 w		5											
82		74th Block Metal Light	400 w	2	15	400 w		5											
83		75th Block Metal Light	400 w	2	15	400 w		5											
84		76th Block Metal Light	400 w	2	15	400 w		5											
85		77th Block Metal Light	400 w	2	15	400 w		5											
86		78th Block Metal Light	400 w	2	15	400 w		5											
87		79th Block Metal Light	400 w	2	15	400 w		5											
88		80th Block Metal Light	400 w	2	15	400 w		5											
89		81st Block Metal Light	400 w	2	15	400 w		5											
90		82nd Block Metal Light	400 w																

Prob Ground Behind Shukla Petrol
 Near Mata Square Indore
INDORE
 GSTIN/UIN: 23ABAPC4968Q22C
 State Name: Madhya Pradesh Code: 23
 Mail: emechen@gmail.com, Office: emechen@gmail.com
 Consignee (Ship to)
SHAIL EDUCATIONAL AND WELFARE SOCIETY
 OPP IIM RAU PITHAMPUR ROAD RAU
 INDORE MADHYA PRADESH
 CONTACT NO: 9827614809
 State Name: Madhya Pradesh Code: 23
 Buyer (Bill to)
SHAIL EDUCATIONAL AND WELFARE SOCIETY
 OPP IIM RAU PITHAMPUR ROAD RAU
 INDORE MADHYA PRADESH
 CONTACT NO: 9827614809
 State Name: Madhya Pradesh Code: 23

Invoice No: **2020**
 Date: **8-Jul-23**
 Delivery Note
 Mode/Terms of Payment
 Reference No. & Date
 Other References
2020 dt. 8-Jul-23
 Buyer's Order No.
 Date:
 Dispatch Doc No.
 Delivery Note Date
 Dispatched through
 Destination
LOCAL
INDORE
 Terms of Delivery

Sl No	Description of Goods and Services	HSN/SAC	Quantity	Rate	per	Ex	Amount
1	RC360B LED36S-6500 V2 L60W60 PSU OD 919415920209	94051100	90 Nos	1,350.00	Nos		1,24,200.00
2	SM360B LED20S-6500 L30W30 PSU OD 919615898096	94051100	1 Nos	1,100.00	Nos		1,100.00
							1,25,300.00
Transportation Charges - 18% ON SALES 996511							1,500.00
CGST							11,412.00
SGST							11,412.00



APPROVED
 [Signature]
 22/7/23



Total 91.00 ₹ 1,49,624.00 E & O/E

Amount Chargeable (in words) **INR One Lakh Forty Nine Thousand Six Hundred Twenty Four Only**

HSN/SAC	Taxable Value	Central Tax Rate	Central Tax Amount	State Tax Rate	State Tax Amount	Total Tax Amount
94051100	1,25,300.00	9%	11,277.00	9%	11,277.00	22,554.00
996511	1,500.00	9%	135.00	9%	135.00	270.00
Total			11,412.00		11,412.00	22,824.00

Tax Amount (in words) **INR Twenty Two Thousand Eight Hundred Twenty Four Only**
 Company's Bank Details
 Bank Name: **KOTAK MAHINDRA BANK**
 A/c No: **7347170922**
 Branch & IF S Code: **ANNAPURNA ROAD**
 Declaration: **for EMECH**
 Company's PAN: **ABAPC4968C**
 Date: **22/7/23**



Tax Invoice

Invoice No: **2101** Dated: **12-Jul-23**
 Delivery Note: _____ Mode/Terms of Payment: _____

Reference No. & Date: **2101 dt. 12-Jul-23** Other References: _____
 Buyer's Order No: _____ Dated: _____

Dispatch Doc No: _____ Delivery Note Date: _____
 Dispatched through: _____ Destination: **PITHAMPUR**

Terms of Delivery: _____

Consignee (Ship to)
 SHAIL EDUCATIONAL AND WELFARE SOCIETY
 OPP IIM RAU PITHAMPUR ROAD RAU
 INDORE MADHYA PRADESH
 CONTACT NO. 9827614809
 State Name: Madhya Pradesh, Code: 23

Buyer (Bill to)
 SHAIL EDUCATIONAL AND WELFARE SOCIETY
 OPP IIM RAU PITHAMPUR ROAD RAU
 INDORE MADHYA PRADESH
 CONTACT NO. 9827614809
 State Name: Madhya Pradesh, Code: 23

Sl No	Description of Goods	HSN/SAC	Quantity	Rate	per	Disc %	Amount
1	Bvp177 LED220 CW 200W FG GR PSU 919615898043	94051090	8 Nos	5,985.00	Nos		47,880.00
							4,309.20
							4,309.20
							(-).0.40

CGST
SGST
Round Off

Handwritten: IIMR, X 50188002, Rbhu, Amawin 20/7, Original Vector, FWS Group

Total 8.00 ₹ 56,498.00
E & Q.E

Amount Chargeable (in words) **INR Fifty Six Thousand Four Hundred Ninety Eight Only**

HSN/SAC	Taxable Value	Central Tax Rate	Central Tax Amount	State Tax Rate	State Tax Amount	Total Tax Amount
94051090	47,880.00	9%	4,309.20	9%	4,309.20	8,618.40
	Total		47,880.00		4,309.20	8,618.40

Tax Amount (in words) **INR Eight Thousand Six Hundred Eighteen and Forty paise Only**
 For 11517117

Company's Bank Details: **KOTAK MAHINDRA BANK C/C - 7347170922**
 Bank Name: **7347170922**
 A/C No: **ANNAPURNA ROAD INDORE**
 Branch & IFS Code: **ANNAPURNA ROAD INDORE**



9
Pump, Near Man Mata Square Indore
INDORE
GSTIN/UIN 23ABAPC4968Q2ZC
State Name Madhya Pradesh, Code 23
E-Mail: Emechem@gmail.com, Office emechem@gmail.com
Consignee (Ship to)
SHAIL EDUCATIONAL AND WELFARE SOCIETY
OPP IIM RAU PITHAMPUR ROAD RAU
INDORE MADHYA PRADESH
CONTACT NO 9827614809
State Name Madhya Pradesh, Code 23
Buyer (Bill to)
SHAIL EDUCATIONAL AND WELFARE SOCIETY
OPP IIM RAU PITHAMPUR ROAD RAU
INDORE MADHYA PRADESH
CONTACT NO 9827614809
State Name Madhya Pradesh, Code 23

2654 7-Aug-23
Delivery Note Mode/Terms of Payment
Reference No & Date Other References
2654 dt. 7-Aug-23 Dated
Buyer's Order No
Dispatch Doc No Delivery Note Date
Dispatched through Destination
Rau Indore
Terms of Delivery

SI No	Description of Goods and Services	HSN/SAC	Quantity	Rate	per Disc %	Amount
1	RC360B LED36S-6500 V2 L60W60 PSU OD 919415920209	94051100	150 Nos.	1,380.00	Nos	2,07,000.00

Transportation Charges - 18% ON SALES 995511 1,500.00
CGST 18,765.00
SGST 18,765.00

11571A
electrical maintenance
X246, 030x
Adhikari
12/8/2023
11/7 Aug/23
10/8



Approved
Advisor
Spansh & SEWS Group

Total 150.00 ₹ 2,46,030.00
Amount Chargeable (in words) INR Two Lakh Forty Six Thousand Thirty Only E & OE

HSN/SAC	Taxable Value	Central Tax Rate	Central Tax Amount	State Tax Rate	State Tax Amount	Total Tax Amount
94051100	2,07,000.00	9%	18,630.00	9%	18,630.00	37,260.00
995511	1,500.00	9%	135.00	9%	135.00	27.00
	Total		2,08,500.00		13,765.00	37,530.00



Amount (in words) INR Thirty Seven Thousand Five Hundred Thirty Only

Company's PAN: ABAPC4968Q
Company's Bank Details: KOTAK MAHINDRA BANK C/C - 7347170922
Branch & IFS Code: ANNAPURNA ROAD, INDORE & KKBK0005111

Declaration
We declare that this invoice shows the actual price of the goods described and that all particulars are true and correct

SUBJECT TO INDORE JURISDICTION



		NPN CONTROL SYSTEMS PVT. LTD.			ORIGINAL					
Regd. Office: - 215, Rani Bagh Colony, Bheslay, Indore- Pithampur Road, Indore (M.P.) 453332										
Contact No.: - +91-9826266154										
GSTIN: 23AAJCN0822D1Z0										
TAX INVOICE										
Invoice No:	NPN/2023-24/45			Transport Mode:	BY ROAD					
Invoice date:	21/02/2024			Vehicle number:	NIL					
Purchase Order No.:	SEWSL/PO/23-24-449	PO Date:	23-01-2024	Date of Supply:	21/02/2024					
State:	Madhya Pradesh	Code:	23	Place of Supply:	Madhya Pradesh					
Bill to Party										
Name:	SHAIL EDUCATIONAL AND WELFARE SOCIETY									
Address:	OPP. IIM, RAU-PITHAMPUR ROAD, RAU, INDORE - 453331									
State:	Madhya Pradesh	Code:	23							
S. No.	Product Description	HSN code	UOM	Qty	Rate	Taxable Value	CGST %	SGST %	Total	
1	Electrical Control Panel-IIP	8537	NOS	1	73,332.06	73,332.06	9	9	73,332.06	
2	Electrical Control Panel-IIMR	8537	NOS	1	60,550.83	60,550.83	9	9	60,550.83	
3	Electrical Control Panel-BBA	8537	NOS	1	60,550.83	60,550.83	9	9	60,550.83	
Total Invoice amount in words							Taxable Amount	194,433.72		
INR Two Lakh Six Thousand Four Hundred Eighty-Eight and Sixty One Paise Only							After 10% Discount	174,990.35		
							Add: CGST	15,749.13		
							Add: SGST	15,749.13		
							Total Tax Amt.	31,498.26		
							Total Amt. After Tax.	206,488.61		
							GST on RCM			
Bank Name: State Bank Of India Branch: (12262)-Avani Plaza, Rau Account Holder: NPN Control Systems Private Limited Account Number: 42395195916 IFSC Code: SBIN0012162				Common Seal						



Ameswari
15-3-24

05/03/24